



Main Burner Removal Instruction Manual

Instructions for: Cast Brass
Burners / Cast Iron Burners

www.mygrillparts.com



WARNING

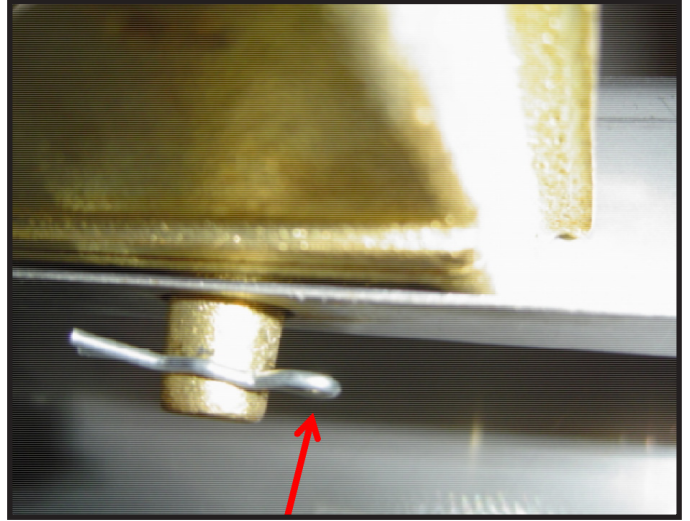
Close the propane tank valve by turning it clockwise and then remove the regulator from the propane tank, or detach the natural gas line, before beginning any grill repairs or service.

1



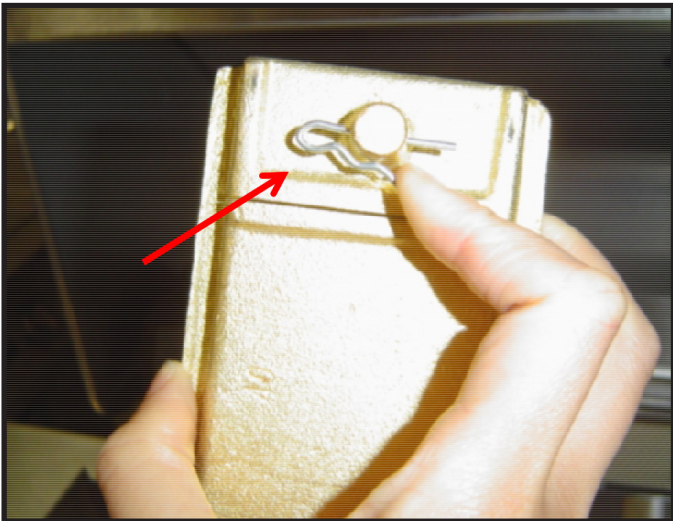
Remove main cooking grids.

2



Locate the cotter pin (stabilizer) underneath each main burner.

3



Push down the cotter pin & pull it out.

4



The main burner can now be removed.



Reassemble the grill using these instructions in reverse order, and perform a gas leak test pursuant to the warning and instructions in the Owner's Manual before using your grill.