



## **Sear Burner Replacement Instruction Manual**

**Tools Required: Phillips Head Screwdriver**



[www.mygrillparts.com](http://www.mygrillparts.com)

1



Open the sear burner lid, and remove the grilling grate that mounts over the sear burner. Set the cooking grid aside in a dry, safe place.

2



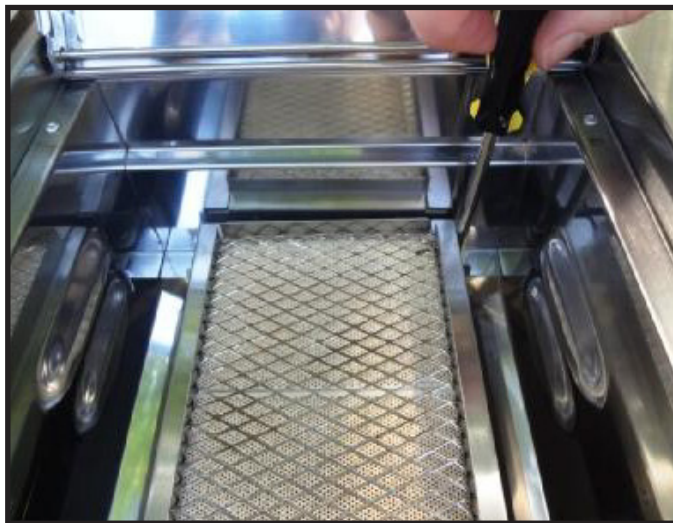
The ignition electrode mounts by one or two screws. Remove and save these screws.

3



Now that the ignition electrodes are free, turn the part to the side so it will not interfere with the removal of your sear burner.

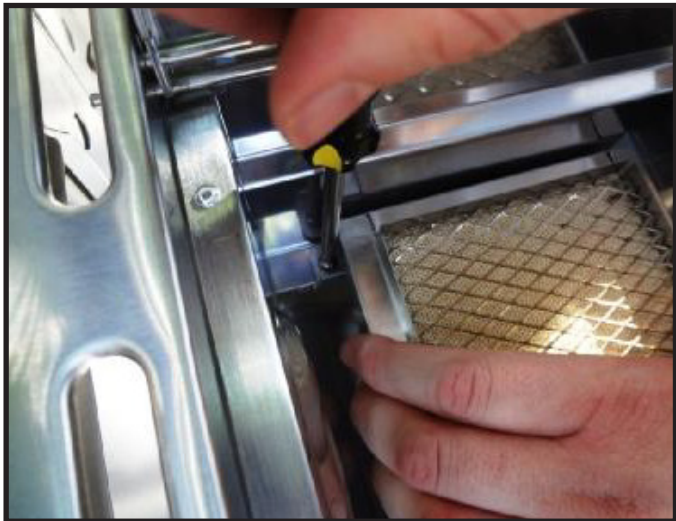
4



At the back of the bowl assembly where the sear burner is seated, locate the two screws where the unit mounts. Some units also have a screw that secures the unit closer to the front.

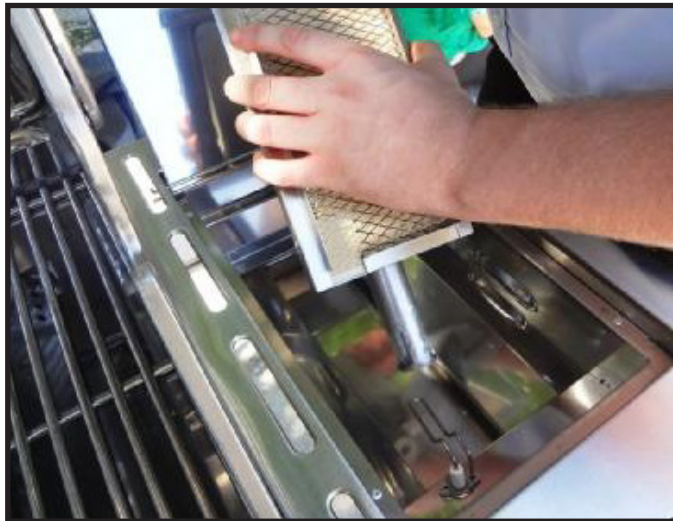


5



Remove the screws that mount the sear burner to the back of the grill. Save these screws as they will be required to install the new unit.

6



Remove the sear burner from the bowl assembly. Lift from the back end of the unit first.

7



Locate the replacement sear burner.

8



Place the searing side burner into the bowl where it mounts. The burner tube at the bottom-front of the unit should be aimed to go into the hole in the front of the bowl assembly.

9



Check that the valve nozzle is inserted into and directing the flow of gas into the sear burner, and that the connection is secure. This is best done by looking from the underside of the unit.

10



Reinstall the screws you removed in Step 5. Turn each of the screws a few turns into the threading, but do not tighten until all screws have been affixed to the unit.

11



Install the screw to the ignition electrode removed on step 2. Make sure that the ignition is placed over the searing side burner near the opening in the grate of the burner.

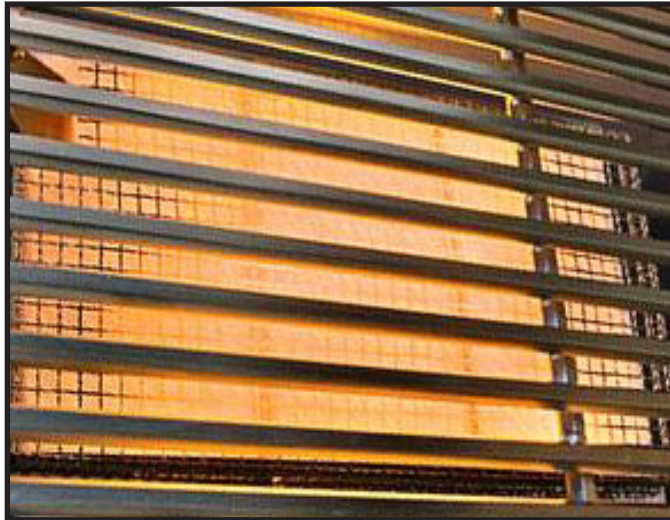
12



Replace the grilling grate over the sear burner.



## Recap



The sear burner should be operated for five (5) minutes after installation to ensure that it is working properly. Do not allow the unit to operate while unattended.

The ceramic surface of the burner should begin to glow an orange color as the surface heats up. Keep the sear burner lid raised during operation and until the burner has cooled. It takes approximately fifteen (15) minutes for the burner to cool after it has been extinguished.

If you need further assistance, please call us at 800-913-8999, to reach technical support.